

Acta Crystallographica Section E

## Structure Reports

Online

ISSN 1600-5368

## 2-(2-Bromophenyl)acetic acid

Rajni Kant,<sup>a\*</sup> Kamini Kapoor<sup>a</sup> and B. Narayana<sup>b</sup>

<sup>a</sup>X-ray Crystallography Laboratory, Post-Graduate Department of Physics & Electronics, University of Jammu, Jammu Tawi 180 006, India, and <sup>b</sup>Department of Studies in Chemistry, Mangalore University, Mangalagangotri 574 199, India  
Correspondence e-mail: rkvk.paper11@gmail.com

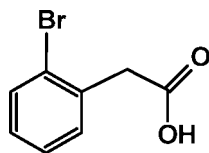
Received 30 April 2012; accepted 7 May 2012

Key indicators: single-crystal X-ray study;  $T = 293$  K; mean  $\sigma(\text{C}-\text{C}) = 0.006$  Å;  $R$  factor = 0.042;  $wR$  factor = 0.096; data-to-parameter ratio = 15.5.

In the title molecule,  $\text{C}_8\text{H}_7\text{BrO}_2$ , the carboxyl group is twisted by  $76.2(3)^\circ$  from the benzene ring plane. In the crystal, molecules are linked into inversion dimers through pairs of  $\text{O}-\text{H}\cdots\text{O}$  hydrogen bonds. The dimers are further linked into layers parallel to the  $bc$  plane by weak  $\text{C}-\text{H}\cdots\text{O}$  hydrogen bonds.

## Related literature

For applications of the title compound, see: Deshpande *et al.* (2008); Rodrigues *et al.* (2002); Pratt *et al.* (2000). For related structures, see: Hodgson & Asplund (1991); Harris *et al.* (1994); Hartung *et al.* (2004); Yuan *et al.* (2008); Jasinski *et al.* (2010); Li *et al.* (2010).



## Experimental

## Crystal data

|                                    |  |
|------------------------------------|--|
| $\text{C}_8\text{H}_7\text{BrO}_2$ | $V = 829.09(7) \text{ \AA}^3$          |
| $M_r = 215.05$                     | $Z = 4$                                |
| Monoclinic, $P2_1/c$               | Mo $K\alpha$ radiation                 |
| $a = 8.9732(5) \text{ \AA}$        | $\mu = 4.90 \text{ mm}^{-1}$           |
| $b = 5.9114(3) \text{ \AA}$        | $T = 293 \text{ K}$                    |
| $c = 15.8489(7) \text{ \AA}$       | $0.3 \times 0.2 \times 0.2 \text{ mm}$ |
| $\beta = 99.529(5)^\circ$          |  |

## Data collection

|   |  |
|---|--|
| Oxford Diffraction Xcalibur Sapphire3 diffractometer                                | 8471 measured reflections              |
| Absorption correction: multi-scan ( <i>CrysAlis PRO</i> ; Oxford Diffraction, 2010) | 1628 independent reflections           |
| $T_{\min} = 0.370$ , $T_{\max} = 1.000$   | 1248 reflections with $I > 2\sigma(I)$ |
|   | $R_{\text{int}} = 0.043$               |

## Refinement

|                                 |  |
|---------------------------------|--|
| $R[F^2 > 2\sigma(F^2)] = 0.042$ | H atoms treated by a mixture of independent and constrained refinement |
| $wR(F^2) = 0.096$               |  |
| $S = 1.07$                      |  |
| 1628 reflections                | $\Delta\rho_{\text{max}} = 0.55 \text{ e \AA}^{-3}$                    |
| 105 parameters                  | $\Delta\rho_{\text{min}} = -0.69 \text{ e \AA}^{-3}$                   |

Table 1

Hydrogen-bond geometry (Å, °).

| $D-\text{H}\cdots A$                             | $D-\text{H}$ | $\text{H}\cdots A$ | $D\cdots A$ | $D-\text{H}\cdots A$ |
|--|--------------|--------------------|-------------|----------------------|
| $\text{O8}-\text{H8}\cdots\text{O9}^{\text{i}}$  | 0.87 (7)     | 1.76 (7)           | 2.630 (4)   | 175 (3)              |
| $\text{C6}-\text{H6}\cdots\text{O9}^{\text{ii}}$ | 0.93         | 2.57               | 3.453 (5)   | 158                  |

Symmetry codes: (i)  $-x, -y + 1, -z + 2$ ; (ii)  $-x, y + \frac{1}{2}, -z + \frac{3}{2}$ .

Data collection: *CrysAlis PRO* (Oxford Diffraction, 2010); cell refinement: *CrysAlis PRO*; data reduction: *CrysAlis PRO*; program(s) used to solve structure: *SHELXS97* (Sheldrick, 2008); program(s) used to refine structure: *SHELXL97* (Sheldrick, 2008); molecular graphics: *ORTEP-3* (Farrugia, 1997); software used to prepare material for publication: *PLATON* (Spek, 2009).

RK acknowledges the Department of Science & Technology for access to the single-crystal X-ray diffractometer sanctioned as a National Facility under project No. SR/S2/CMP-47/2003 and the University of Jammu, Jammu, India, for financial support. BN thanks the UGC for financial assistance through the SAP and BSR one-time grant for the purchase of chemicals.

Supplementary data and figures for this paper are available from the IUCr electronic archives (Reference: CV5295).

## References

- Deshpande, P. P., Nanduri, V. B., Pullockaran, A., Christie, H., Mueller, R. H. & Patel, R. N. (2008). *J. Ind. Microbiol. Biotechnol.* **35**, 901–906.
- Farrugia, L. J. (1997). *J. Appl. Cryst.* **30**, 565.
- Harris, K. D. M., Tremayne, M., Lightfoot, P. & Bruce, P. G. (1994). *J. Am. Chem. Soc.* **116**, 3543–3547.
- Hartung, J., Špehar, K., Svoboda, I. & Fuess, H. (2004). *Acta Cryst.* **E60**, o95–o96.
- Hodgson, D. J. & Asplund, R. O. (1991). *Acta Cryst.* **C47**, 1986–1987.
- Jasinski, J. P., Butcher, R. J., Swamy, M. T., Narayana, B., Sarojini, B. K. & Yathirajan, H. S. (2010). *J. Chem. Crystallogr.* **40**, 25–28.
- Li, J.-S., He, Q.-X. & Li, P.-Y. (2010). *Acta Cryst.* **E66**, o110.
- Oxford Diffraction (2010). *CrysAlis PRO*. Oxford Diffraction Ltd, Yarnton, Oxfordshire, England.
- Pratt, J., Jimonet, P., Bohme, G. A., Boireau, A., Damour, D., Debono, M. W., Borella, A. G., Randle, J. C. R., Ribeill, Y., Stutzmann, J.-M., Vuilhorgne, M. & Mignani, S. (2000). *Bioorg. Med. Chem. Lett.* **10**, 2749–2754.
- Rodrigues, D. C., de Meijere, A. & Marsaioli, A. J. (2002). *J. Braz. Chem. Soc.* **13**, 664–668.
- Sheldrick, G. M. (2008). *Acta Cryst.* **A64**, 112–122.
- Spek, A. L. (2009). *Acta Cryst.* **D65**, 148–155.
- Yuan, Y.-Q., Guo, S.-R. & Wang, L.-J. (2008). *Acta Cryst.* **E64**, o2435.

## supplementary materials

*Acta Cryst.* (2012). E68, o1704 [doi:10.1107/S1600536812020545]

**2-(2-Bromophenyl)acetic acid****Rajni Kant, Kamini Kapoor and B. Narayana****Comment**

The title compound, (I), has many applications in various syntheses, for example, in the synthesis of heterocyclic compounds (Deshpande *et al.*, 2008) and in the synthesis of AMPA antagonists - substituted quinoxalinediones, quinolones, isatinoximes and benzodiazepine derivatives (Pratt *et al.*, 2000). It can also be used in a gas chromatography as a phase transfer catalyst (Rodriguesa *et al.*, 2002). Herein we report its crystal structure.

In (I) (Fig. 1), all bond lengths and angles are normal and correspond to those observed in related structures (Hodgson & Asplund, 1991; Harris *et al.*, 1994; Hartung *et al.*, 2004; Yuan *et al.*, 2008; Jasinski *et al.*, 2010; Li *et al.*, 2010). The carboxyl group is twisted at 76.2 (3)° from the benzene ring plane. Intermolecular O—H···O hydrogen bonds (Table 1) link the molecules into centrosymmetric dimers. Weak intermolecular C—H···O interactions (Table 1) link further these dimers into layers parallel to *bc* plane.

**Experimental**

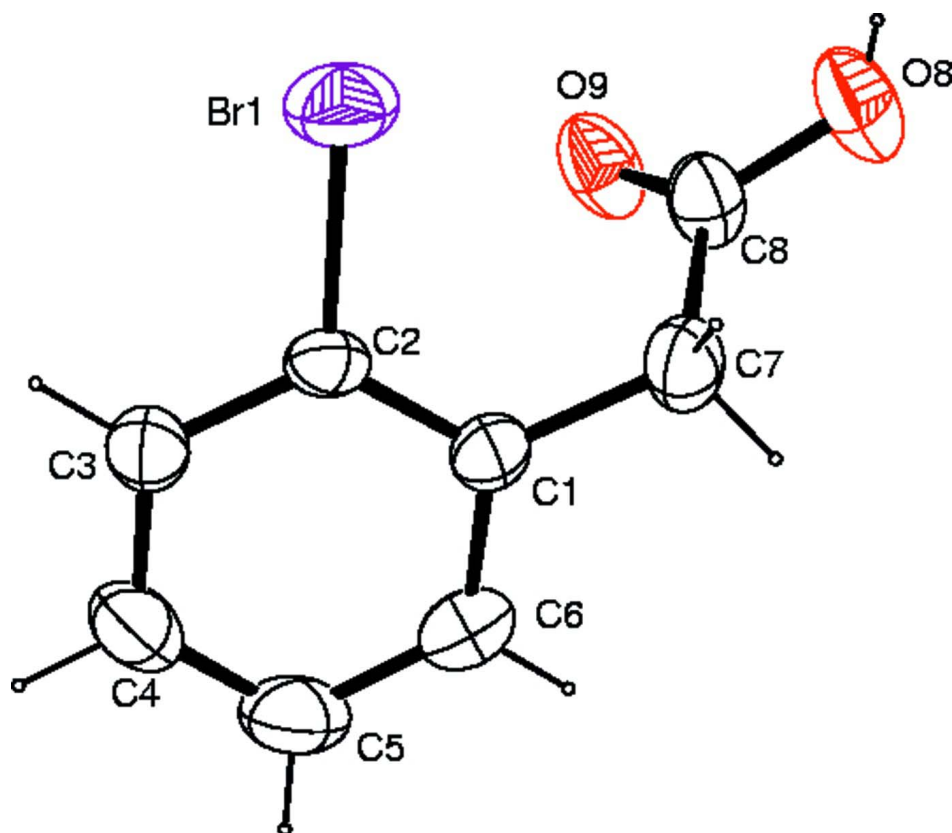
The title compound was purchased from the Spectrochem Ltd., Mumbai. Single-crystals were grown from acetone and toluene(1:1) mixture by slow evaporation method.

**Refinement**

Atom H8 was found in a difference map and isotropically refined. C-bound H atoms were positioned geometrically (C—H 0.93–0.97 Å), and were treated as riding, with  $U_{\text{iso}}(\text{H}) = 1.2U_{\text{eq}}(\text{C})$ .

**Computing details**

Data collection: *CrysAlis PRO* CCD (Oxford Diffraction, 2010); cell refinement: *CrysAlis PRO* CCD (Oxford Diffraction, 2010); data reduction: *CrysAlis PRO* RED (Oxford Diffraction, 2010); program(s) used to solve structure: *SHELXS97* (Sheldrick, 2008); program(s) used to refine structure: *SHELXL97* (Sheldrick, 2008); molecular graphics: *ORTEP-3* (Farrugia, 1997); software used to prepare material for publication: *PLATON* (Spek, 2009).



**Figure 1**

ORTEP view of the molecule with the atom-labeling scheme. The Displacement ellipsoids are drawn at the 40% probability level. H atoms are shown as small spheres of arbitrary radii.

## 2-(2-Bromophenyl)acetic acid

### Crystal data

$C_8H_7BrO_2$

$M_r = 215.05$

Monoclinic,  $P2_1/c$

Hall symbol: -P 2ybc

$a = 8.9732 (5) \text{ \AA}$

$b = 5.9114 (3) \text{ \AA}$

$c = 15.8489 (7) \text{ \AA}$

$\beta = 99.529 (5)^\circ$

$V = 829.09 (7) \text{ \AA}^3$

$Z = 4$

$F(000) = 424$

$D_x = 1.723 \text{ Mg m}^{-3}$

Melting point = 381–377 K

Mo  $K\alpha$  radiation,  $\lambda = 0.71073 \text{ \AA}$

Cell parameters from 3025 reflections

$\theta = 3.4\text{--}29.1^\circ$

$\mu = 4.90 \text{ mm}^{-1}$

$T = 293 \text{ K}$

Prism, white

$0.3 \times 0.2 \times 0.2 \text{ mm}$

### Data collection

Oxford Diffraction Xcalibur Sapphire3  
diffractometer

Radiation source: fine-focus sealed tube

Graphite monochromator

Detector resolution: 16.1049 pixels  $\text{mm}^{-1}$

$\omega$  scan

Absorption correction: multi-scan

(*CrysAlis PRO RED*; Oxford Diffraction, 2010)

$T_{\min} = 0.370$ ,  $T_{\max} = 1.000$

8471 measured reflections

1628 independent reflections

1248 reflections with  $I > 2\sigma(I)$

$R_{\text{int}} = 0.043$

$\theta_{\max} = 26.0^\circ$ ,  $\theta_{\min} = 3.7^\circ$   
 $h = -11 \rightarrow 11$

$k = -7 \rightarrow 7$   
 $l = -19 \rightarrow 19$

*Refinement*

Refinement on  $F^2$   
 Least-squares matrix: full  
 $R[F^2 > 2\sigma(F^2)] = 0.042$   
 $wR(F^2) = 0.096$   
 $S = 1.07$   
 1628 reflections  
 105 parameters  
 0 restraints  
 Primary atom site location: structure-invariant  
 direct methods  
 Secondary atom site location: difference Fourier  
 map

Hydrogen site location: inferred from  
 neighbouring sites  
 H atoms treated by a mixture of independent  
 and constrained refinement  
 $w = 1/[\sigma^2(F_o^2) + (0.0324P)^2 + 1.055P]$   
 where  $P = (F_o^2 + 2F_c^2)/3$   
 $(\Delta/\sigma)_{\max} = 0.001$   
 $\Delta\rho_{\max} = 0.55 \text{ e } \text{\AA}^{-3}$   
 $\Delta\rho_{\min} = -0.69 \text{ e } \text{\AA}^{-3}$   
 Extinction correction: *SHELXL97* (Sheldrick,  
 2008),  $F_c^* = kF_c[1 + 0.001 \times F_c^2 \lambda^3 / \sin(2\theta)]^{-1/4}$   
 Extinction coefficient: 0.071 (3)

*Special details*

**Experimental.** *CrysAlis PRO*, Oxford Diffraction Ltd., Version 1.171.34.40 (release 27-08-2010 *CrysAlis171.NET*) (compiled Aug 27 2010, 11:50:40) Empirical absorption correction using spherical harmonics, implemented in *SCALE3 ABSPACK* scaling algorithm.

**Geometry.** All e.s.d.'s (except the e.s.d. in the dihedral angle between two l.s. planes) are estimated using the full covariance matrix. The cell e.s.d.'s are taken into account individually in the estimation of e.s.d.'s in distances, angles and torsion angles; correlations between e.s.d.'s in cell parameters are only used when they are defined by crystal symmetry. An approximate (isotropic) treatment of cell e.s.d.'s is used for estimating e.s.d.'s involving l.s. planes.

**Refinement.** Refinement of  $F^2$  against ALL reflections. The weighted  $R$ -factor  $wR$  and goodness of fit  $S$  are based on  $F^2$ , conventional  $R$ -factors  $R$  are based on  $F$ , with  $F$  set to zero for negative  $F^2$ . The threshold expression of  $F^2 > \sigma(F^2)$  is used only for calculating  $R$ -factors(gt) *etc.* and is not relevant to the choice of reflections for refinement.  $R$ -factors based on  $F^2$  are statistically about twice as large as those based on  $F$ , and  $R$ -factors based on ALL data will be even larger.

*Fractional atomic coordinates and isotropic or equivalent isotropic displacement parameters ( $\text{\AA}^2$ )*

|     | <i>x</i>    | <i>y</i>    | <i>z</i>    | $U_{\text{iso}}^*/U_{\text{eq}}$ |
|-----|-------------|-------------|-------------|----------------------------------|
| Br1 | 0.42140 (6) | 0.23223 (8) | 0.92648 (3) | 0.0681 (3)                       |
| C1  | 0.2498 (4)  | 0.4863 (6)  | 0.7908 (2)  | 0.0427 (9)                       |
| C2  | 0.3352 (4)  | 0.2936 (6)  | 0.8109 (2)  | 0.0395 (8)                       |
| C3  | 0.3640 (4)  | 0.1404 (7)  | 0.7497 (3)  | 0.0498 (10)                      |
| H3  | 0.4208      | 0.0110      | 0.7654      | 0.060*                           |
| C4  | 0.3078 (6)  | 0.1819 (8)  | 0.6660 (3)  | 0.0627 (12)                      |
| H4  | 0.3275      | 0.0813      | 0.6241      | 0.075*                           |
| C5  | 0.2223 (6)  | 0.3715 (9)  | 0.6430 (3)  | 0.0689 (13)                      |
| H5  | 0.1839      | 0.3990      | 0.5857      | 0.083*                           |
| C6  | 0.1935 (5)  | 0.5208 (7)  | 0.7051 (3)  | 0.0599 (12)                      |
| H6  | 0.1347      | 0.6480      | 0.6890      | 0.072*                           |
| C7  | 0.2239 (5)  | 0.6574 (7)  | 0.8568 (3)  | 0.0570 (11)                      |
| H7A | 0.3211      | 0.7023      | 0.8887      | 0.068*                           |
| H7B | 0.1779      | 0.7906      | 0.8276      | 0.068*                           |
| O8  | 0.1337 (4)  | 0.7126 (6)  | 0.9850 (2)  | 0.0710 (10)                      |
| C8  | 0.1266 (4)  | 0.5795 (7)  | 0.9188 (3)  | 0.0520 (10)                      |
| O9  | 0.0457 (3)  | 0.4130 (5)  | 0.9081 (2)  | 0.0650 (9)                       |
| H8  | 0.072 (7)   | 0.678 (10)  | 1.020 (5)   | 0.11 (2)*                        |

Atomic displacement parameters ( $\text{\AA}^2$ )

|     | $U^{11}$    | $U^{22}$    | $U^{33}$    | $U^{12}$     | $U^{13}$    | $U^{23}$     |
|-----|-------------|-------------|-------------|--------------|-------------|--------------|
| Br1 | 0.0835 (4)  | 0.0712 (4)  | 0.0440 (3)  | -0.0020 (2)  | -0.0059 (2) | 0.0091 (2)   |
| C1  | 0.049 (2)   | 0.0354 (19) | 0.047 (2)   | -0.0069 (16) | 0.0158 (18) | 0.0034 (16)  |
| C2  | 0.045 (2)   | 0.041 (2)   | 0.0330 (19) | -0.0082 (16) | 0.0085 (16) | 0.0050 (15)  |
| C3  | 0.058 (2)   | 0.043 (2)   | 0.052 (3)   | -0.0005 (18) | 0.021 (2)   | 0.0007 (19)  |
| C4  | 0.085 (3)   | 0.059 (3)   | 0.049 (3)   | -0.015 (2)   | 0.026 (2)   | -0.014 (2)   |
| C5  | 0.088 (3)   | 0.079 (3)   | 0.038 (3)   | -0.007 (3)   | 0.004 (2)   | 0.007 (2)    |
| C6  | 0.070 (3)   | 0.053 (2)   | 0.055 (3)   | 0.007 (2)    | 0.006 (2)   | 0.016 (2)    |
| C7  | 0.070 (3)   | 0.040 (2)   | 0.067 (3)   | -0.005 (2)   | 0.029 (2)   | -0.004 (2)   |
| O8  | 0.080 (2)   | 0.069 (2)   | 0.071 (2)   | -0.0264 (17) | 0.0341 (19) | -0.0325 (17) |
| C8  | 0.053 (2)   | 0.048 (2)   | 0.058 (3)   | -0.0015 (19) | 0.019 (2)   | -0.010 (2)   |
| O9  | 0.0697 (19) | 0.0631 (19) | 0.069 (2)   | -0.0253 (16) | 0.0323 (16) | -0.0258 (16) |

Geometric parameters ( $\text{\AA}$ ,  $^\circ$ )

|              |            |             |           |
|--------------|------------|-------------|-----------|
| Br1—C2       | 1.901 (4)  | C5—C6       | 1.378 (6) |
| C1—C2        | 1.380 (5)  | C5—H5       | 0.9300    |
| C1—C6        | 1.383 (5)  | C6—H6       | 0.9300    |
| C1—C7        | 1.502 (5)  | C7—C8       | 1.491 (6) |
| C2—C3        | 1.383 (5)  | C7—H7A      | 0.9700    |
| C3—C4        | 1.361 (6)  | C7—H7B      | 0.9700    |
| C3—H3        | 0.9300     | O8—C8       | 1.304 (5) |
| C4—C5        | 1.373 (7)  | O8—H8       | 0.87 (7)  |
| C4—H4        | 0.9300     | C8—O9       | 1.218 (5) |
| C2—C1—C6     | 116.6 (4)  | C6—C5—H5    | 120.2     |
| C2—C1—C7     | 122.6 (4)  | C5—C6—C1    | 121.7 (4) |
| C6—C1—C7     | 120.8 (4)  | C5—C6—H6    | 119.1     |
| C1—C2—C3     | 122.6 (4)  | C1—C6—H6    | 119.1     |
| C1—C2—Br1    | 120.1 (3)  | C8—C7—C1    | 115.2 (3) |
| C3—C2—Br1    | 117.2 (3)  | C8—C7—H7A   | 108.5     |
| C4—C3—C2     | 118.9 (4)  | C1—C7—H7A   | 108.5     |
| C4—C3—H3     | 120.5      | C8—C7—H7B   | 108.5     |
| C2—C3—H3     | 120.5      | C1—C7—H7B   | 108.5     |
| C3—C4—C5     | 120.4 (4)  | H7A—C7—H7B  | 107.5     |
| C3—C4—H4     | 119.8      | C8—O8—H8    | 115 (4)   |
| C5—C4—H4     | 119.8      | O9—C8—O8    | 123.3 (4) |
| C4—C5—C6     | 119.7 (4)  | O9—C8—C7    | 123.9 (4) |
| C4—C5—H5     | 120.2      | O8—C8—C7    | 112.8 (4) |
| C6—C1—C2—C3  | -0.2 (5)   | C4—C5—C6—C1 | 0.6 (7)   |
| C7—C1—C2—C3  | -177.4 (3) | C2—C1—C6—C5 | -0.6 (6)  |
| C6—C1—C2—Br1 | 178.8 (3)  | C7—C1—C6—C5 | 176.8 (4) |
| C7—C1—C2—Br1 | 1.5 (5)    | C2—C1—C7—C8 | -68.9 (5) |
| C1—C2—C3—C4  | 0.9 (6)    | C6—C1—C7—C8 | 114.0 (4) |
| Br1—C2—C3—C4 | -178.1 (3) | C1—C7—C8—O9 | -15.8 (6) |
| C2—C3—C4—C5  | -0.9 (6)   | C1—C7—C8—O8 | 166.1 (4) |
| C3—C4—C5—C6  | 0.2 (7)    |             |           |

Hydrogen-bond geometry (Å, °)

| $D-H\cdots A$                   | $D-H$    | $H\cdots A$ | $D\cdots A$ | $D-H\cdots A$ |
|---------------------------------|----------|-------------|-------------|---------------|
| O8—H8 $\cdots$ O9 <sup>i</sup>  | 0.87 (7) | 1.76 (7)    | 2.630 (4)   | 175 (3)       |
| C6—H6 $\cdots$ O9 <sup>ii</sup> | 0.93     | 2.57        | 3.453 (5)   | 158           |

Symmetry codes: (i)  $-x, -y+1, -z+2$ ; (ii)  $-x, y+1/2, -z+3/2$ .